



## SEEPZ SEZ AUTHORITY

No.: 2025\_SEEPZ\_851387\_1

Date: 04/03/2025

### Corrigendum – 1

**Tender Title:** E – Tender cum E- Auction for “Allotment of Galas at SEEPZ SEZ, Mumbai”

**Tender Reference No.:** SEEPZM-IT/9/2025-PROC/01

**Tender ID:** 2025\_SEEPZ\_851387\_1

S.no	Original Clause & Text	Changes / Addition to the Clause
1	Clause no. 2.3 “Description of Galas”, Table 2, Page no.12 & 13 of RFP	The amended table 2 to be read as per below Table no. 2
2	Clause 4.11 “List of Galas”, Table 4, Page no. 24 & 25	The amended table 4 to be read as per below Table no. 4
3	Annexure D, “Details of Units”, Page no. 51 & 52	The amended Annexure D to be read as below as Annexure D

*Handwritten signature and date: 04/03/2025*

Hanish Rathi

Assistant Development Commissioner  
SEEPZ SEZ Authority, Mumbai

1. Clause 2.3 "Description of Galas, Table 2, is revised as per below:

Table No.2

S.no	Gala No	Floor no.	Name of Building	Carpet area (in Sqm)	Reserve Rental / sqm/year (Rs.)	Date and time slot for e-auction
<b>Lot 1</b>						
1	104	1	NEST - 2	30.36	6,500	will be intimated after opening of financial bid
2	202	2	NEST - 2	30.36		
3	203	2	NEST - 2	30.36		
4	307	3	NEST - 2	30.36		
5	308	3	NEST - 2	30.36		
6	405	4	NEST - 2	30.36		
7	406	4	NEST - 2	30.36		
8	506	5	NEST - 2	30.36		
9	507	5	NEST - 2	30.36		
10	605	6	NEST - 2	30.36		
11	606	6	NEST - 2	30.36		
12	129D	G	SDF - V	89		
<b>Lot 2</b>						
13	103	1	NEST - 2	139.54	6,500	will be intimated after opening of financial bid
14	122	2	SDF - IV	158		
15	505	5	NEST - 2	200		
16	121A	2	SDF -IV	206		
17	305	3	NEST - 2	422		
18	121	2	SDF -IV	465		
19	304	3	NEST - 2	485		
20	164	1	SDF - VI	532		
21	501	5	NEST - 2	578.97		
<b>Lot 3</b>						
22	G32	2	G&J III	657	6,500	will be intimated after opening of financial bid
23	301	3	NEST - 2	710.64		
24	601	6	NEST - 2	710		
25	602	6	NEST - 2	710		
26	603	6	NEST - 2	710		
27	604	6	NEST - 2	710		
28	403	4	NEST - 2	846.83		
29	51	G	SDF - II	875		

2. Clause 4.11 "List of Galas", Table 4 is revised as per below

Table No.4

Sr No	Gala No	Floor no.	Name of Building	Carpet area (in Sqm)	Reserve Rental / sqm/year (Rs.)	EMD in Rs. (2% x 5 x Reserve Rental x Area in sqm)
1	104	1	NEST - 2	30.36	6,500	19,734
2	202	2	NEST - 2	30.36		
3	203	2	NEST - 2	30.36		
4	307	3	NEST - 2	30.36		
5	308	3	NEST - 2	30.36		
6	405	4	NEST - 2	30.36		
7	406	4	NEST - 2	30.36		
8	506	5	NEST - 2	30.36		
9	507	5	NEST - 2	30.36		
10	605	6	NEST - 2	30.36		
11	606	6	NEST - 2	30.36		
12	129D	G	SDF - V	89	6,500	57,850
13	103	1	NEST - 2	139.54		90,701
14	122	2	SDF - IV	158		1,02,700
15	505	5	NEST - 2	200		1,30,000
16	121A	2	SDF -IV	206		1,33,900
17	305	3	NEST - 2	422		2,74,300
18	121	2	SDF -IV	465	6,500	3,02,250
19	304	3	NEST - 2	485		3,15,250
20	164	1	SDF - VI	532		3,45,800
21	501	5	NEST - 2	578.97		3,76,331
22	G32	2	G&J III	657		4,27,050
23	301	3	NEST - 2	710.64		4,61,916
24	601	6	NEST - 2	710		4,61,500
25	602	6	NEST - 2	710		4,61,500
26	603	6	NEST - 2	710		4,61,500
27	604	6	NEST - 2	710		4,61,500
28	403	4	NEST - 2	846.83		5,50,440
29	51	G	SDF - II	875		5,68,750



### 3. Annexure D - DETAILS OF THE UNITS



# SEEPZ SEZ MAP

#### Legend

 Location of units

 SEEPZ SEZ  
Boundary

 Site Entrance Gates



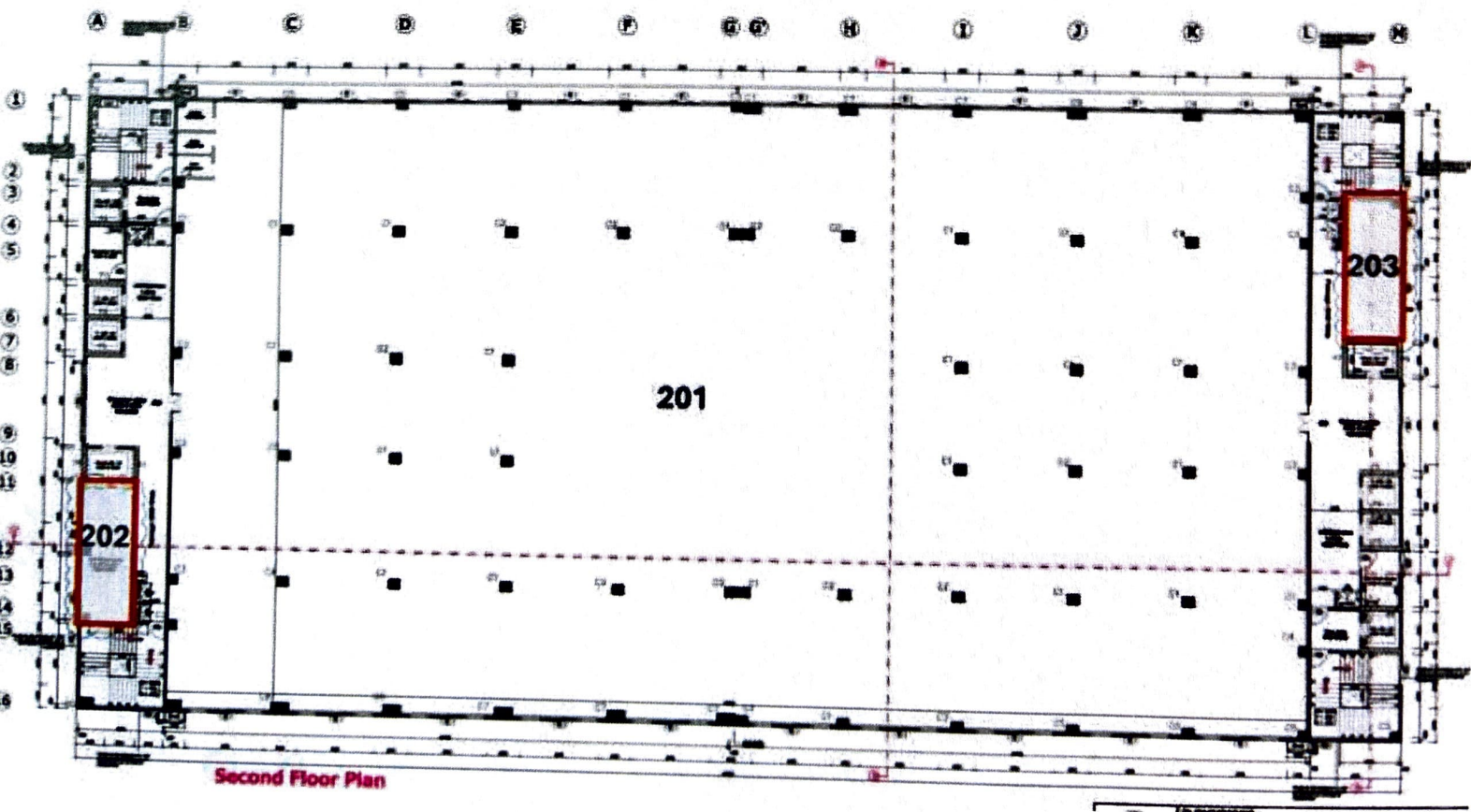
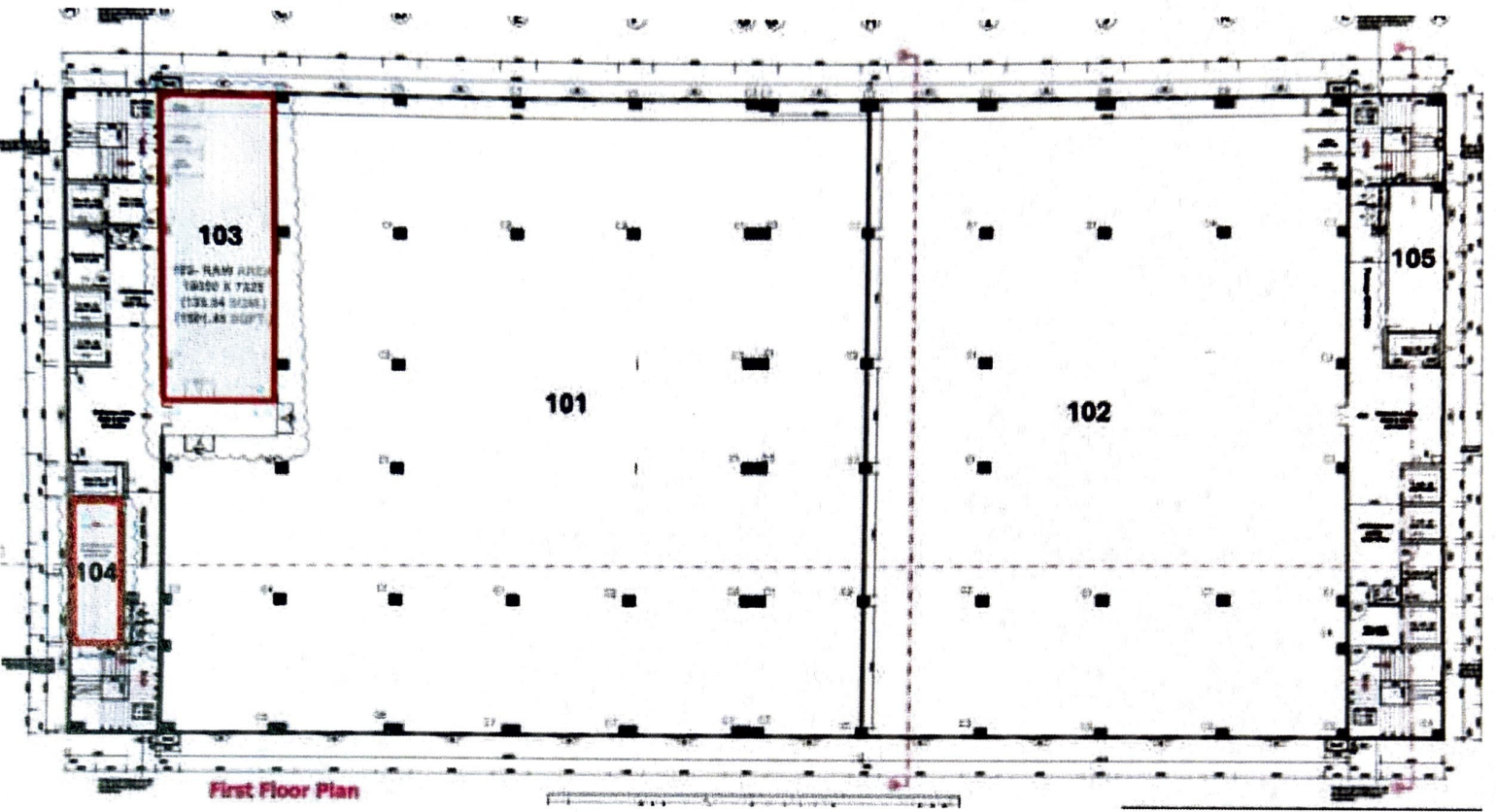
**Note:** Map not to scale. For representation purpose only



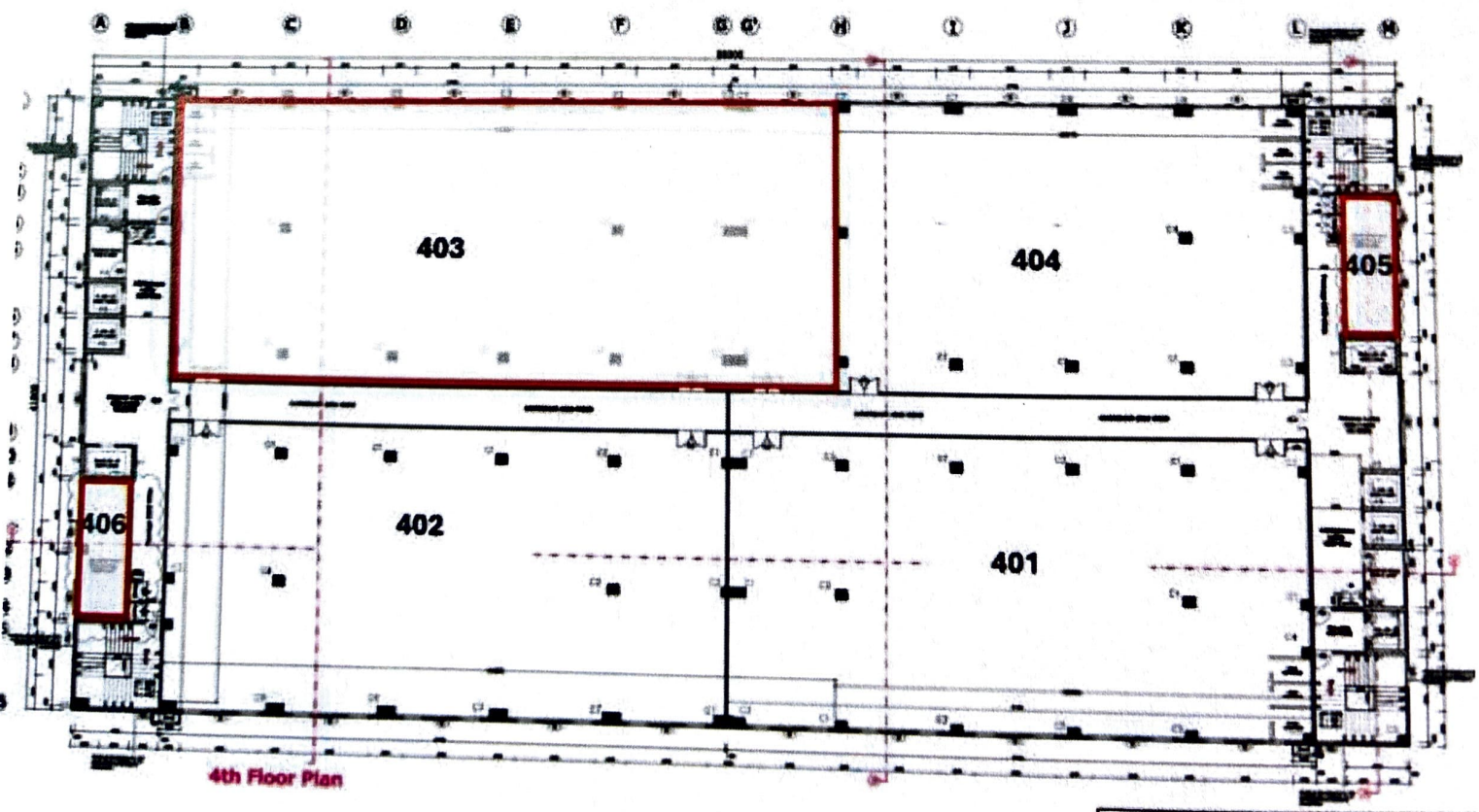
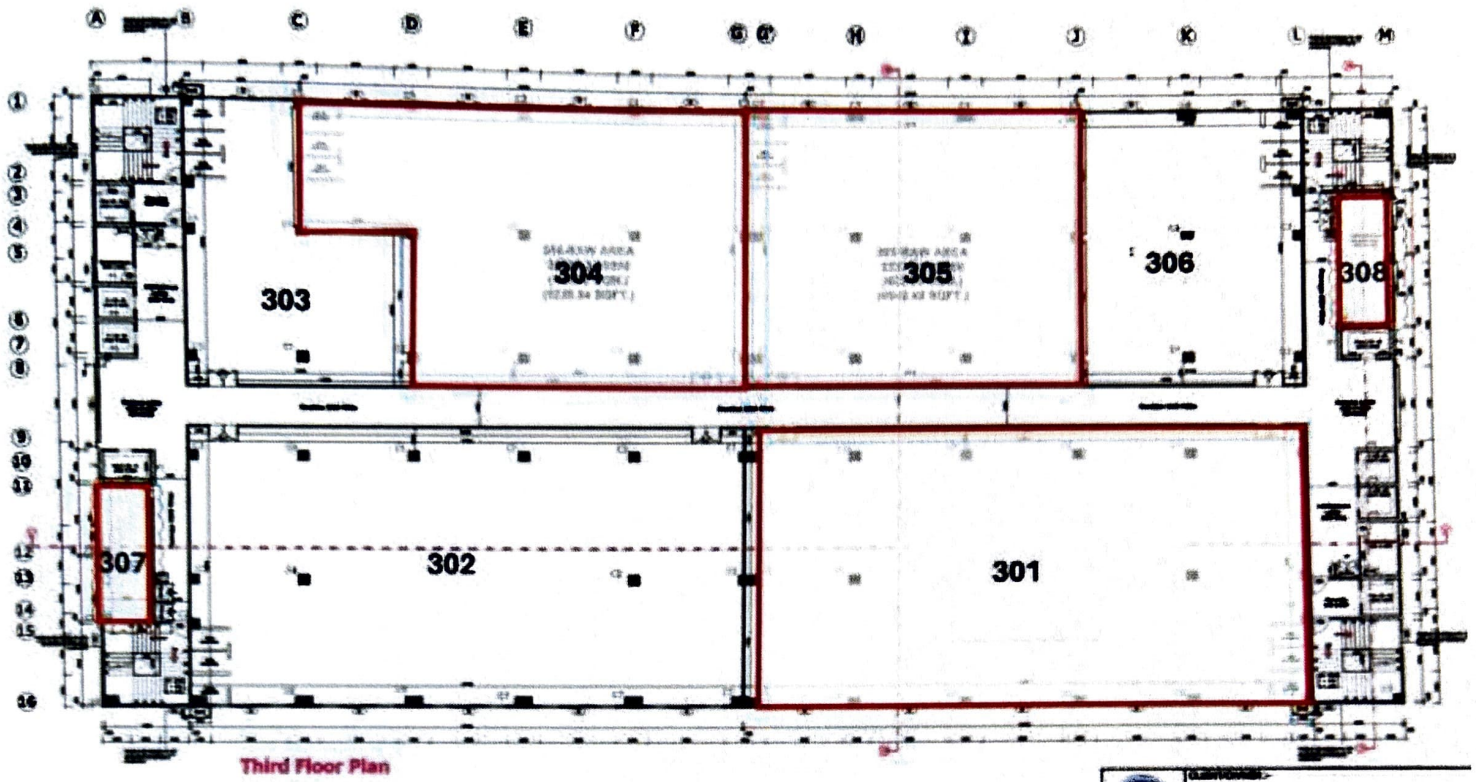
**List of Galas**

<b>Sr No</b>	<b>Gala No</b>	<b>Floor no.</b>	<b>Name of Building</b>	<b>Carpet area (in Sqm)</b>	<b>Reserve Rental / sqm/year (Rs.)</b>	<b>Date and time slot for e-auction</b>
<b>Lot 1</b>						
1	104	1	NEST - 2	30.36	6,500	will be intimated after opening of financial bid
2	202	2	NEST - 2	30.36		
3	203	2	NEST - 2	30.36		
4	307	3	NEST - 2	30.36		
5	308	3	NEST - 2	30.36		
6	405	4	NEST - 2	30.36		
7	406	4	NEST - 2	30.36		
8	506	5	NEST - 2	30.36		
9	507	5	NEST - 2	30.36		
10	605	6	NEST - 2	30.36		
11	606	6	NEST - 2	30.36		
12	129D	G	SDF - V	89		
<b>Lot 2</b>						
13	103	1	NEST - 2	139.54	6,500	will be intimated after opening of financial bid
14	122	2	SDF - IV	158		
15	505	5	NEST - 2	200		
16	121A	2	SDF -IV	206		
17	305	3	NEST - 2	422		
18	121	2	SDF -IV	465		
19	304	3	NEST - 2	485		
20	164	1	SDF - VI	532		
21	501	5	NEST - 2	578.97		
<b>Lot 3</b>						
22	G32	2	G&J III	657	6,500	will be intimated after opening of financial bid
23	301	3	NEST - 2	710.64		
24	601	6	NEST - 2	710		
25	602	6	NEST - 2	710		
26	603	6	NEST - 2	710		
27	604	6	NEST - 2	710		
28	403	4	NEST - 2	846.83		
29	51	G	SDF - II	875		

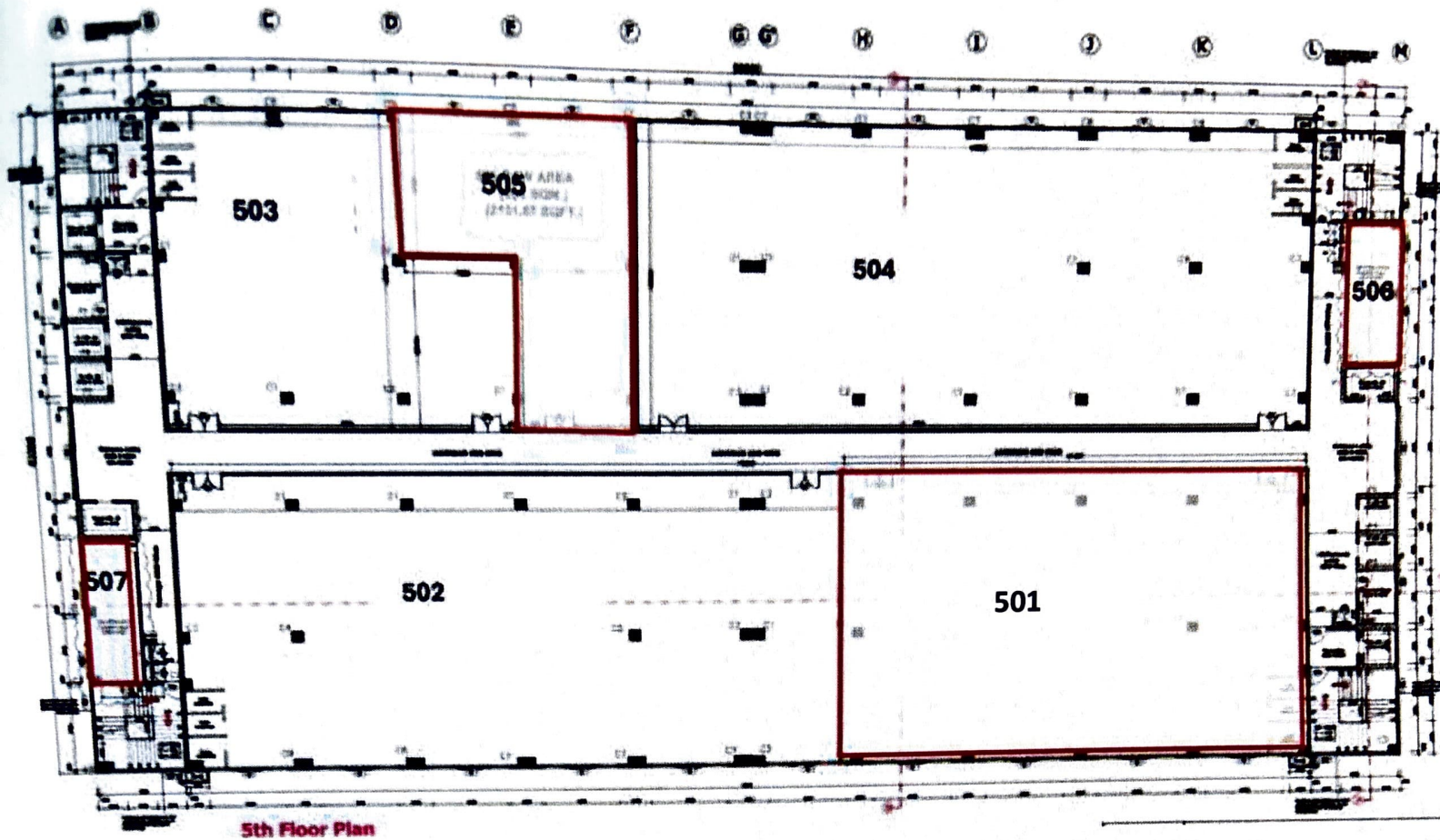
**NEST - 2 : Layout Plans**  
(Note: Area marked in Red are galas for allotment)



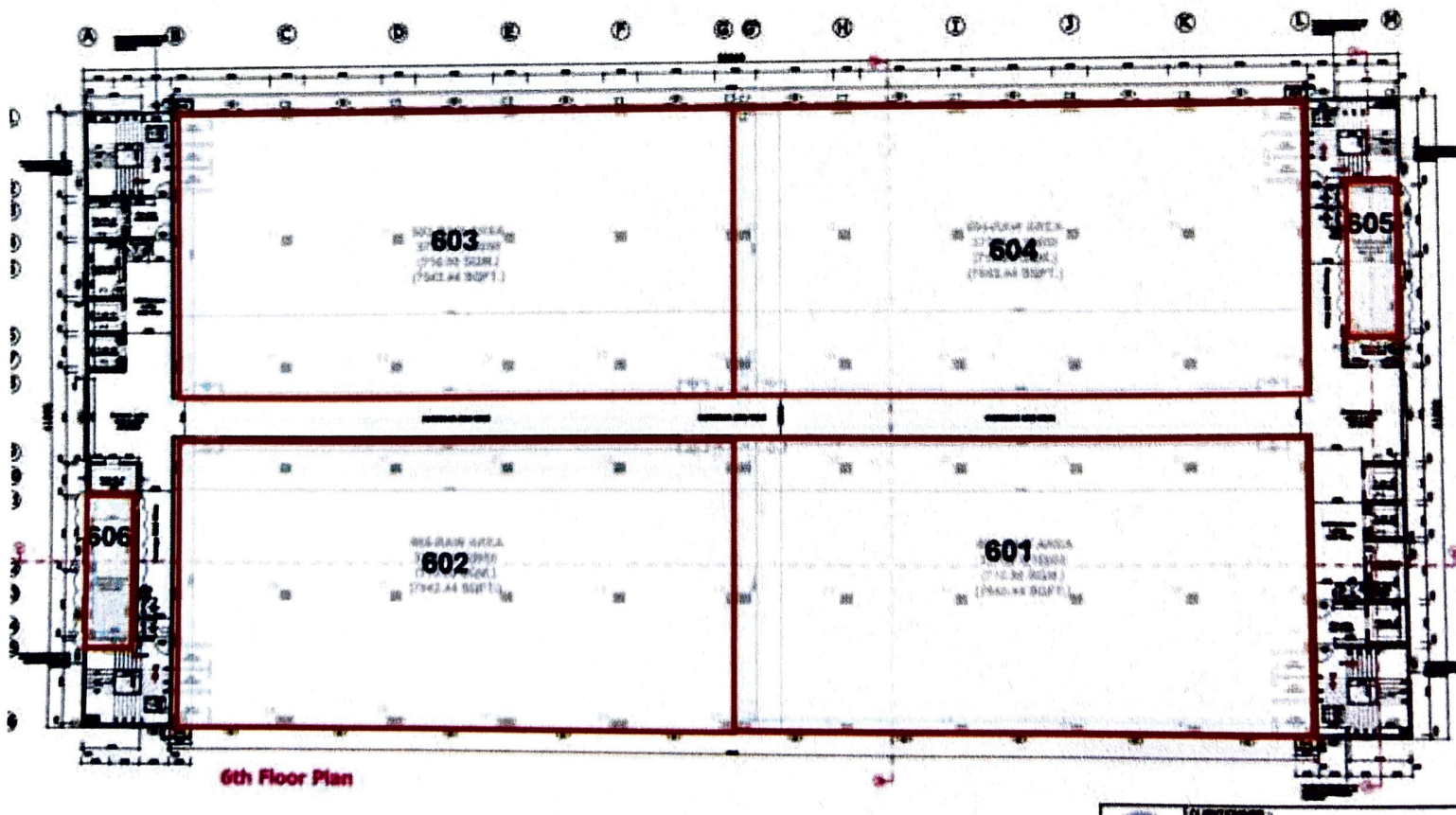








5th Floor Plan



6th Floor Plan